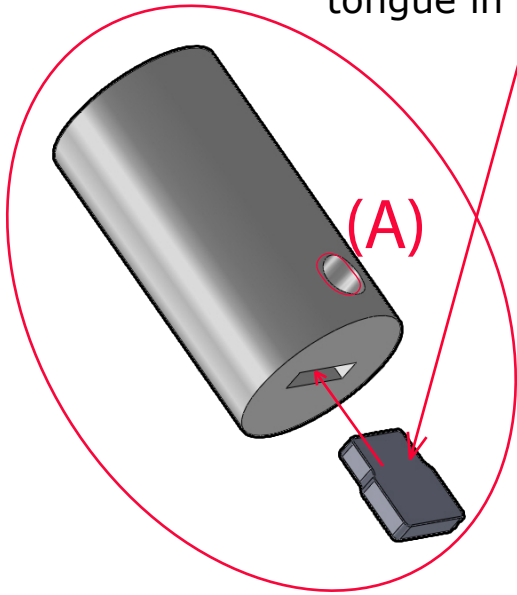


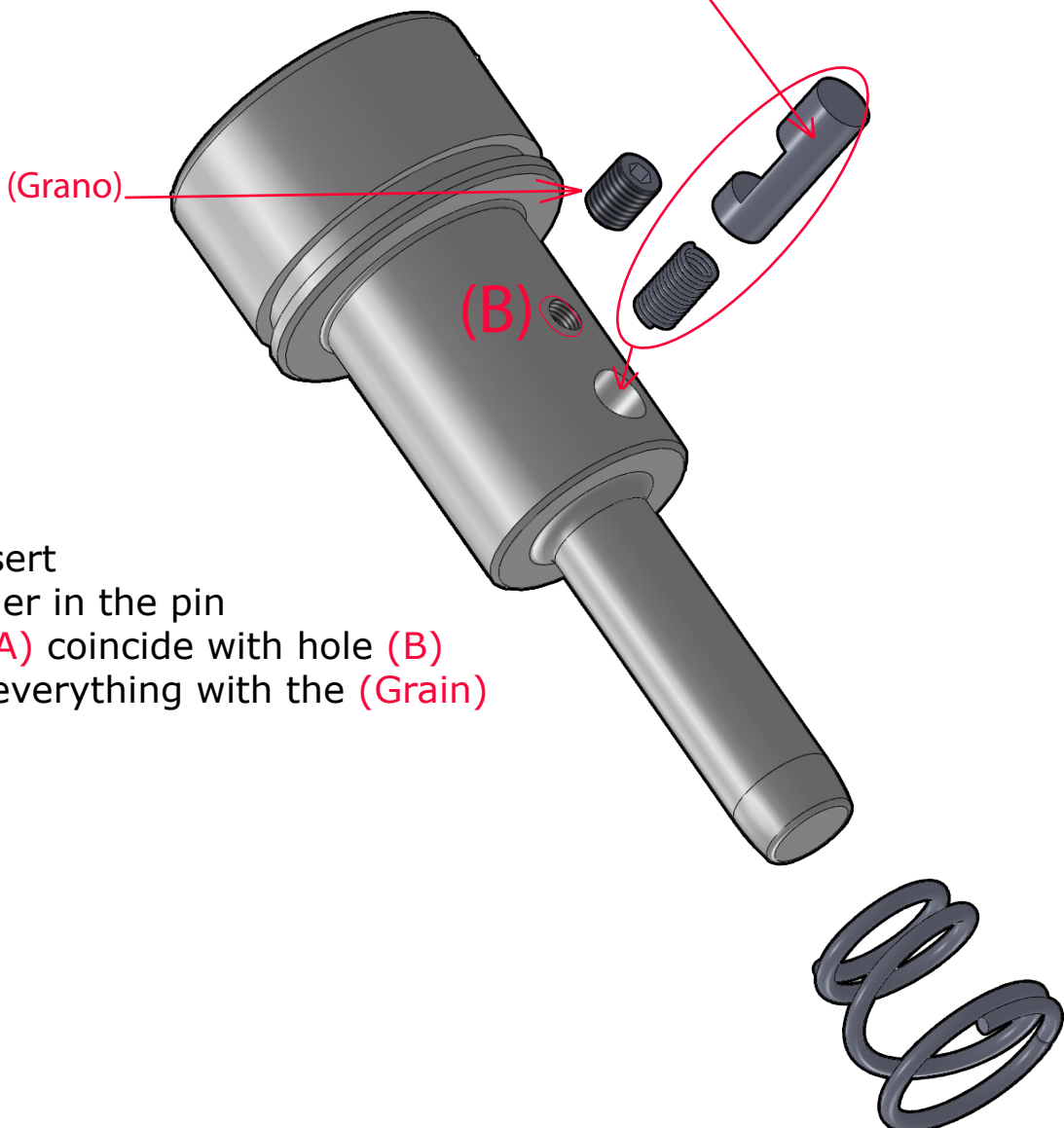
Assembly of lock body and pin

First step: insert tongue in the lock cylinder



Second step: insert spring and stop in the casing pin hole, respecting the order of the pieces and the direction of the stop.
Warning: press and hold in until you performs the third step

Longer side to the outside



Third step: insert the lock cylinder in the pin making hole (A) coincide with hole (B) and stopping everything with the (Grain)